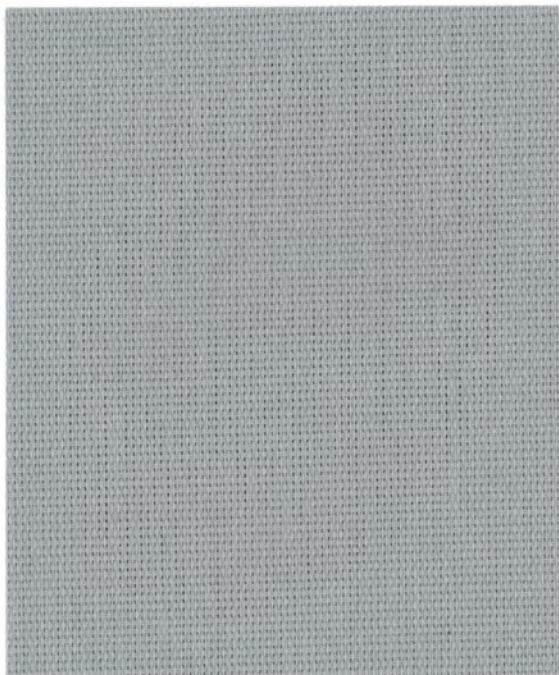


SilverScreen™ 1904 Plus

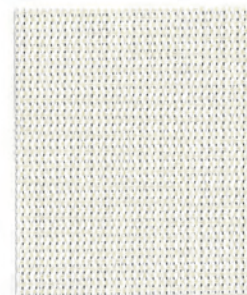
transparent



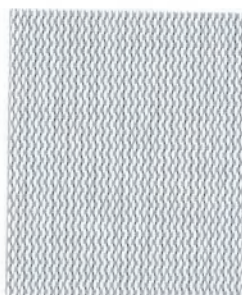
↑ 1904-05



↑ 1904-01



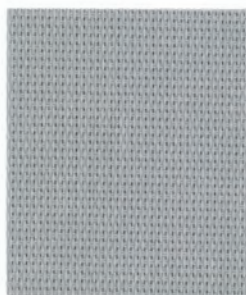
↑ 1904-02



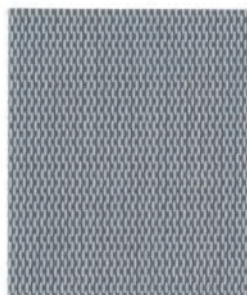
↑ 1904-03



↑ 1904-04



↑ 1904-05



↑ 1904-06



↑ 1904-07



↑ 1904-08



↑ 1904-09



↑ 1904-10



Roller



Interior

Dye lot colours may vary.

SilverScreen™ 1904 Plus

transparent

SilverScreen™ 1904 Plus | interior shading system

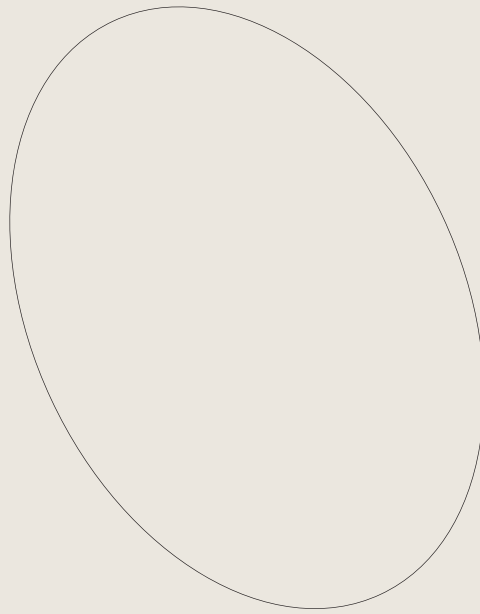
Technical Specifications

| PARAMETERS | SILVERSCREEN™ 1904 PLUS SERIES |
|----------------------|--|
| standard width | 240cm (94.5") |
| standard roll length | 30 m (33 L/yd) |
| weight | 400 g/m ² (11.8 oz/yd ²) |
| fabric thickness | 0.5 mm (0.02") |
| breaking strength | |
| warp | 280 lbs/in. |
| weft | 250 lbs/in. |
| composition | 36% fiberglass / 64% vinyl Ultra-fine layer of aluminum |

Fire Classification: NFPA 701-10 TM#1, CAN/ULC-S109-03 - Small Flame Test, NFP 92503 specification M1, BS 5867 Part 2 type B

Bacteria & Fungal Resistance: ASTM E 2149-01, ASTM G21

Lead Free: RoHS



SilverScreen™ is a trademark of Verosol Group B.V.

Solar Heat Control Properties Interior Use - Zero Degree Profile Angle

(In accordance with ASHRAE Standard 74-1988)

| FABRIC | Solar optical properties | | | TV | shading coefficient – screen with: | |
|----------|--------------------------|----|----|----|------------------------------------|---------|
| | 100% | | | | single | |
| | TS | RS | AS | | 1/4" CL | 1/4" HA |
| 1904-01 | 6 | 63 | 31 | 8 | 0.33 | 0.32 |
| 1904-02* | 6 | 63 | 31 | 8 | 0.33 | 0.32 |
| 1904-03* | 6 | 63 | 31 | 8 | 0.33 | 0.32 |
| 1904-04* | 6 | 63 | 31 | 8 | 0.33 | 0.32 |
| 1904-05 | 6 | 65 | 29 | 7 | 0.32 | 0.31 |
| 1904-06* | 6 | 65 | 29 | 7 | 0.32 | 0.31 |
| 1904-07* | 6 | 65 | 29 | 7 | 0.32 | 0.31 |
| 1904-08* | 6 | 65 | 29 | 7 | 0.32 | 0.31 |
| 1904-09* | 6 | 65 | 29 | 7 | 0.32 | 0.31 |
| 1904-10 | 5 | 65 | 30 | 7 | 0.32 | 0.31 |

* Colours with approximate data.

TS = Solar Transmission
 RS = Solar Reflectance
 AS = Solar Absorptance

TV = Visible Light Transmission

1/4" CL = 1/4" Clear Glass
 1/4" HA = 1/4" Heat Absorbing Glass

The shading coefficient represents the percentage of solar heat gain coming into a room through the blind and glazing. It is marked between 0 and 1. A low percentage indicates a good protection against heat gain. Darker colours provide maximum glare reduction and visibility because they diffuse less light. For complete technical information, test results, performance specifications and larger samples, contact our Technical Department.

Performance evaluations conducted by Matrix Inc.

■ Openness Factor (OF): Ratio of area of holes to the total area measured.

www.sunproject.com Toronto 888.836.6980 | Vancouver 888.980.9899 | Montreal 800.363.5930



OF 4%



Flame Resistant



Antibacterial



Lead Free Fabric



Greenguard®



Tested for harmful substances according to Deko-Test Standard 100