

TexOpaque™ Eco 6300

blackout



↑ 6300-06



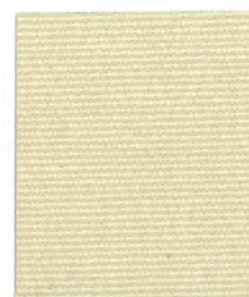
↑ 6300-01



↑ 6300-02



↑ 6300-03



↑ 6300-04



↑ 6300-05



↑ 6300-06



↑ 6300-07



↑ 6300-08



Roller



Interior

Dye lot colours may vary.

TexOpaque™ Eco 6300

blackout

TexOpaque™ Eco 6300 | interior shading system

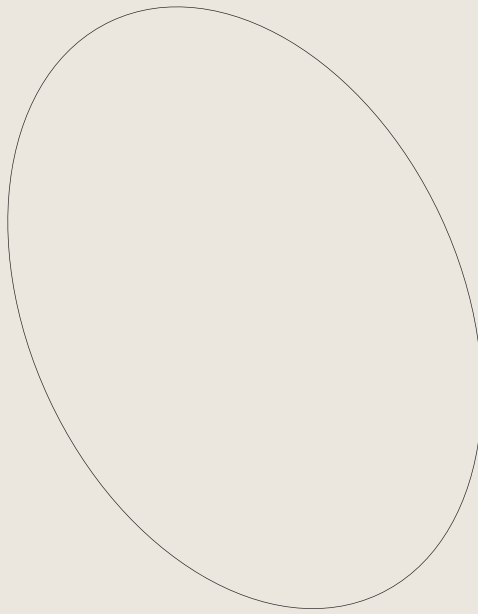
Technical Specifications

PARAMETERS	TEXOPAQUE™ ECO 6300 SERIES
standard width	299.7 cm (118")
standard roll length	27.4 m (30 L/yd)
weight	454.7 g/m ² (13.41 oz/yd ²)
fabric thickness	0.66 mm (0.026")
breaking strength	
warp	205 lbs/in.
weft	225 lbs/in.
composition	100% polyester with acrylic backing (PVC free)

Fire Classification: California U.S. Title 19 (small scale), NFPA 701-2004 TM#1 (small scale), BS 5867 2008 Part 2 Type B Performance, CAN/ULC-S109-03 - Small and Large Flame Test, CAN/CGSB2-4.162-M80

Bacteria and Fungal Resistance: ASTM G21-96, AATCC 174-1998 Part II and III

Lead Free: RoHS/Directive 2002/95/EC, US Consumer Product Safety Commission Section 101, ANSI/WCMA A100.1-2007 for lead content



TexOpaque™ is a trademark of Altex®.

Solar Heat Control Properties Interior Use - Zero Degree Profile Angle

(In accordance with ASHRAE Standard 74-1988)

FABRIC	Solar optical properties			TV	shading coefficient – shade with:			shading coefficient – shade with:	
	100%				single			insulating	
	TS	RS	AS		1/8" CL	1/4" CL	1/4" HA	1" CL	1" HA
6300-01	0	64	36	0	0.31	0.31	0.30	0.30	0.24
6300-02	0	64	36	0	0.31	0.31	0.30	0.30	0.24
6300-03	0	64	36	0	0.31	0.31	0.30	0.30	0.24
6300-04	0	64	36	0	0.31	0.31	0.30	0.30	0.24
6300-05	0	64	36	0	0.31	0.31	0.30	0.30	0.24
6300-06	0	64	36	0	0.31	0.31	0.30	0.30	0.24
6300-07	0	64	36	0	0.31	0.31	0.30	0.30	0.24
6300-08	0	64	36	0	0.31	0.31	0.30	0.30	0.24

TS = Solar Transmission
RS = Solar Reflectance
AS = Solar Absorptance

TV = Visible Light Transmission

1/8" CL = 1/8" Clear Glass
1/4" CL = 1/4" Clear Glass
1/4" HA = 1/4" Heat Absorbing Glass

1" CL = 1" Clear Glass
1" HA = 1" Heat Absorbing Glass

The shading coefficient represents the percentage of solar heat gain coming into a room through the blind and glazing. It is marked between 0 and 1. A low percentage indicates a good protection against heat gain. Darker colours provide maximum glare reduction and visibility because they diffuse less light. For complete technical information, test results, performance specifications and larger samples, contact our Technical Department. Performance evaluations conducted by Matrix Inc. **Cleaning instructions:** Fabric should be regularly dusted/vacuumed as appropriate. If commercial spot cleaners are used, they must be tested and allowed to dry on an inconspicuous area to ensure compatibility.

www.sunproject.com | Toronto 888.836.6980 | Vancouver 888.980.9899 | Montreal 800.363.5930



Blackout



Flame Resistant



Antibacterial



Lead Free Fabric



PVC Free Fabric



Recyclable



Greenguard®