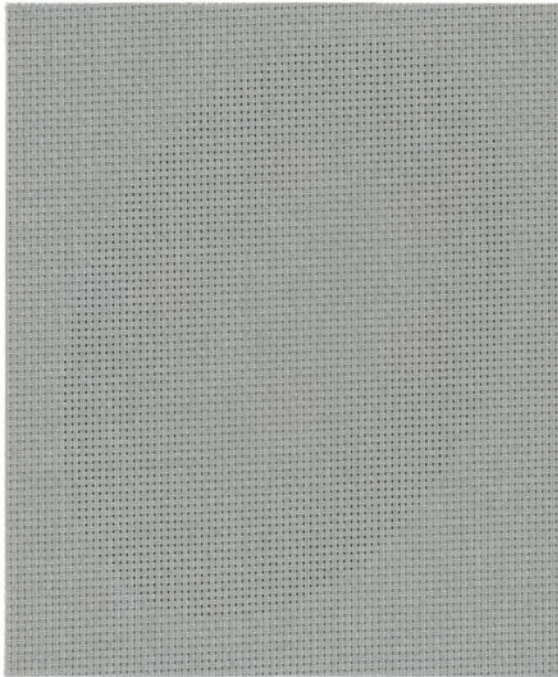


TexScreen® 9105

transparent



↑ 9105-06



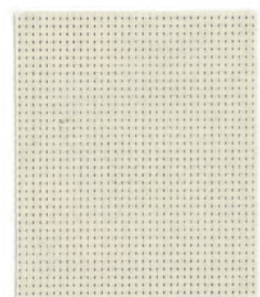
↑ 9105-01



↑ 9105-02



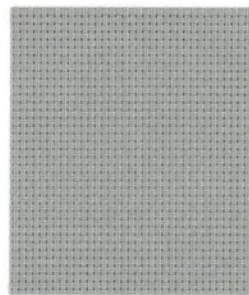
↑ 9105-03



↑ 9105-04



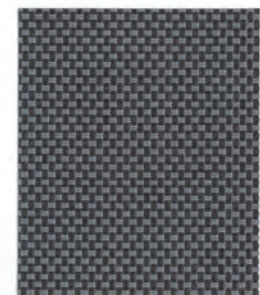
↑ 9105-05



↑ 9105-06



↑ 9105-07



↑ 9105-08



↑ 9105-09



↑ 9105-10



Roller



Specialty



Interior

Dye lot colours may vary.

TexScreen® 9105

transparent

TexScreen® 9105 | interior shading system

Technical Specifications

PARAMETERS	TEXSCREEN® 9105 SERIES
standard width	320 cm (126")
standard roll length	27.4 m (30 L/yd)
weight	403 g/m ² (11.8 oz/yd ²)
fabric thickness	0.432 mm (0.017")
breaking strength	
warp	250 lbs/in.
weft	235 lbs/in.
composition	35% fiberglass / 65% vinyl on fiberglass

Fire Classification: California U.S. Title 19 (small scale), NFPA 701-2004 TM#1 (small scale), NFPA 101 (Class A Rating), UBC (Class I), BS 5867 2008 Part 2 type B Performance, NFPA 701 TM#2 (large scale), CAN/ULC-S109-03 (large and small scale), CAN/CGSB2-4.162-M80

Bacteria & Fungal Resistance: ASTM E 2180, ASTM G22, AATCC30 Part 3, ASTM D 3273, ASTM 6329; Includes Microban antimicrobial additives

Lead Free: RoHS/Directive 2002/95/EC, US Consumer Product Safety Commission Section 101, ANSI/WCMA A100.1-2007 for lead content, REACH (EC 1907/2006)



TexScreen® is a registered trademark of Altex®.

Solar Heat Control Properties Interior Use - Zero Degree Profile Angle

(In accordance with ASHRAE Standard 74-1988)

FABRIC	Solar optical properties				TV	shading coefficient – screen with:			shading coefficient – screen with:		
	100%			%		single			insulating		
	TS	RS	AS			1/8" CL	1/4" CL	1/4" HA	1/2" CL	1" CL	1" HA
9105-01	21	61	18	14	0.38	0.38	0.34	0.36	0.35	0.27	
9105-02	17	54	29	12	0.42	0.41	0.36	0.39	0.38	0.29	
9105-03	14	45	41	10	0.48	0.46	0.39	0.45	0.43	0.32	
9105-04	14	47	39	10	0.46	0.45	0.38	0.43	0.42	0.31	
9105-05	11	38	51	9	0.52	0.50	0.41	0.49	0.46	0.33	
9105-06	10	31	59	9	0.57	0.54	0.43	0.53	0.50	0.35	
9105-07	7	18	75	9	0.65	0.62	0.47	0.61	0.56	0.39	
9105-08	5	9	86	6	0.70	0.67	0.49	0.66	0.60	0.41	
9105-09	6	6	88	6	0.73	0.69	0.50	0.68	0.62	0.42	
9105-10	4	4	92	5	0.73	0.69	0.51	0.69	0.63	0.43	

TS = Solar Transmission
RS = Solar Reflectance
AS = Solar Absorbance

TV = Visible Light Transmission

1/8" CL = 1/8" Clear Glass
1/4" CL = 1/4" Clear Glass
1/4" HA = 1/4" Heat Absorbing Glass

1/2" CL = 1/2" Clear Glass
1" CL = 1" Clear Glass
1" HA = 1" Heat Absorbing Glass

The shading coefficient represents the percentage of solar heat gain coming into a room through the blind and glazing. It is marked between 0 and 1. A low percentage indicates a good protection against heat gain. Darker colours provide maximum glare reduction and visibility because they diffuse less light.

For complete technical information, test results, performance specifications and larger samples, contact our Technical Department.

Performance evaluations conducted by Matrix Inc.

■ Openness Factor (OF): Ratio of area of holes to the total area measured.

www.sunproject.com Toronto 888.836.6980 | Vancouver 888.980.9899 | Montreal 800.363.5930



OF 5%



Flame Resistant



Antibacterial



Lead Free Fabric



Greenguard®

