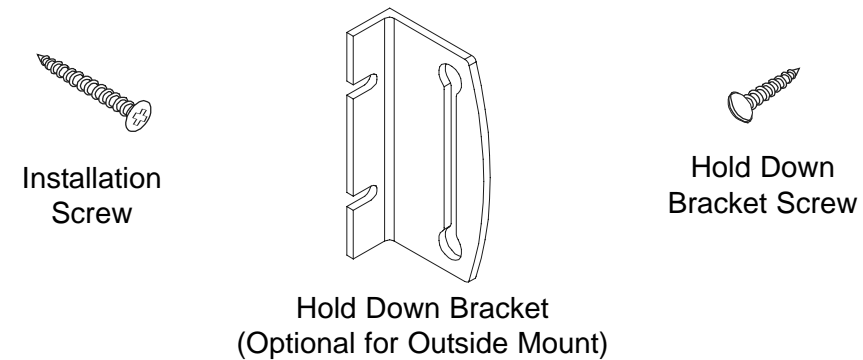


BASICS

A few simple tools are required:

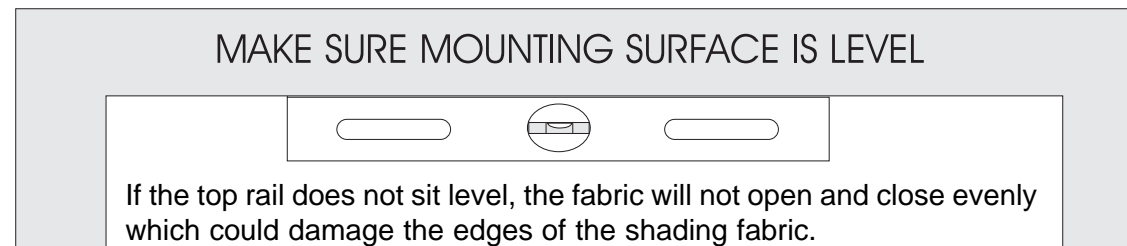
- Measuring tape
- Carpenters Level
- Power drill or Phillips head Screwdriver
- 1/4" Hex head and/or Phillips driver bit
- Scissors
- Pencil

Additional fasteners other than those sent with your shading may be required depending on the mounting surface. Wallboard and plaster require the use of anchors such as expansion or toggle bolts. Brick, tile or stone need special plugs and drill bits. Remember to always pre-drill holes in wood to avoid splitting.



For easier installation, it is recommended that two people are used when installing the shade.

NOTE: Do not remove the Polymask Film that is wrapped around the shade and bubble wrap until after installation is complete.

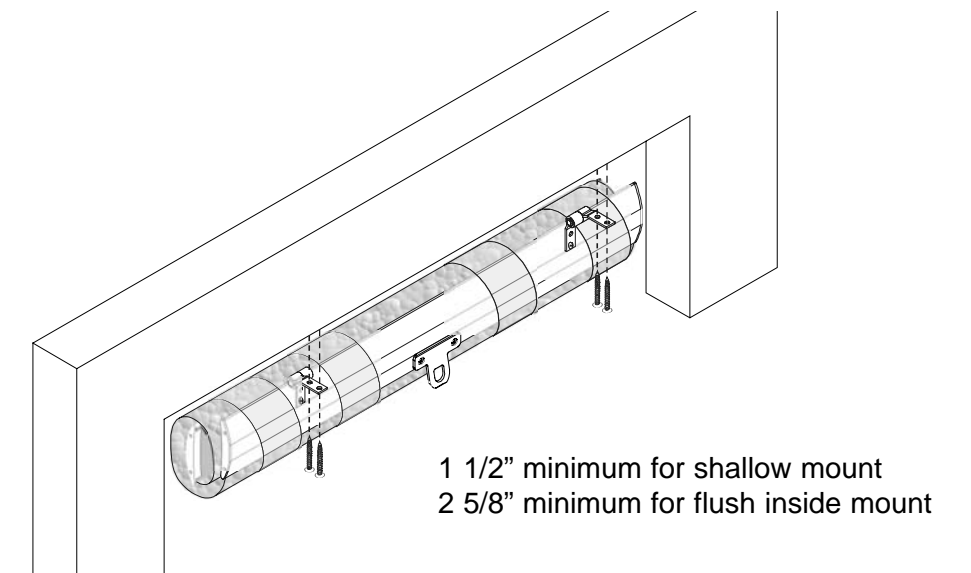


Step 1. HANGING THE SHADE

Line up the hinges with the mounting surface. Make sure the shade is level and mark the holes with a pencil. Remove the shade and pre-drill the holes at the marks. Line up the hinges with the pre-drilled holes and screw in place. While holding the shade, carefully unwrap or cut the polymask film. Slowly unroll the shade to its full drop.

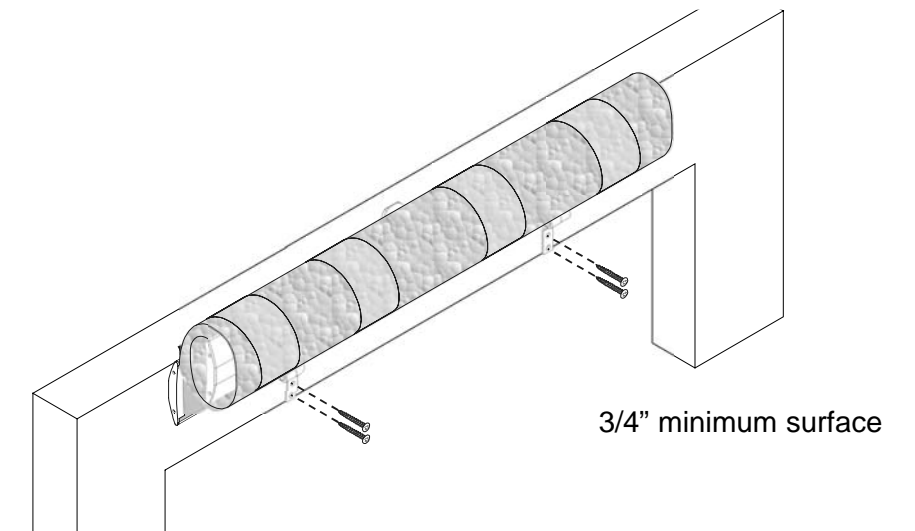
Inside Mount

For an inside mount, the hinges should be rotated so that the shade is rolled away from you as far as possible. Once mounted, the polymask film may be removed.



Outside Mount

For an outside mount, the hinges should be rotated so that the shade is rolled towards you as far as possible. Once mounted, the polymask film may be removed.



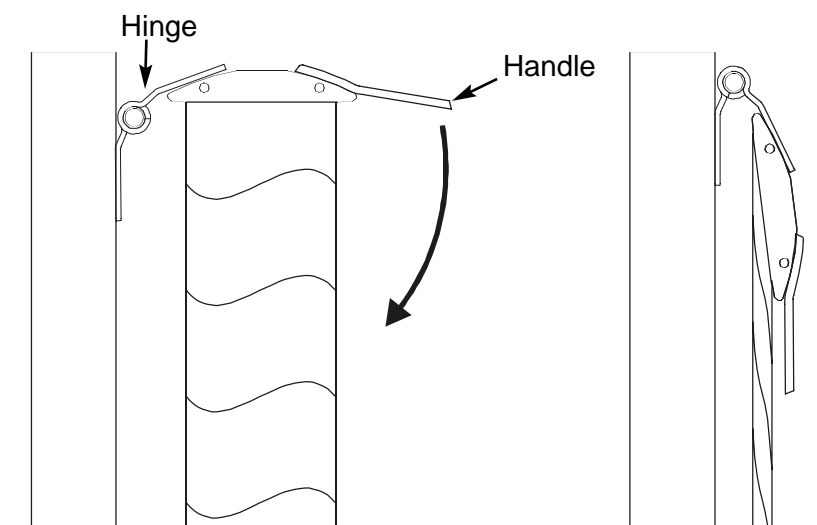
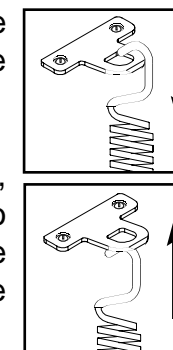
Step 2. OPERATION

Pull down on handle for the shade to close.

To raise, push handle up until the view through position is visible.

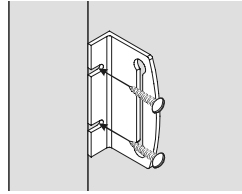
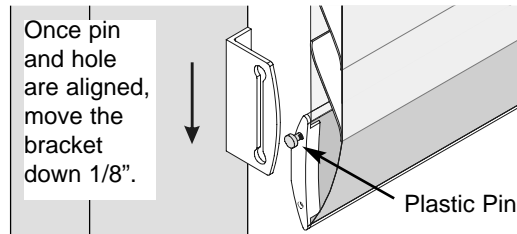
If using a pole, use the hole provided in the handle to lower the rail.

When raising the rail, push under the handle to raise. Try not to get the hook caught in the handle when pushing up on it.



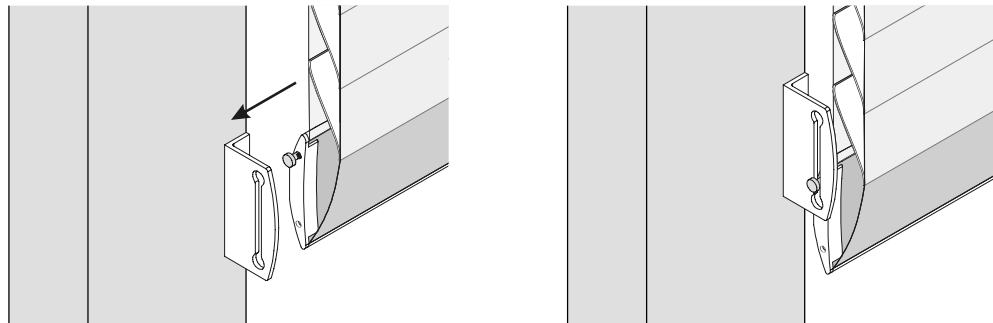
Step 3. HOLD DOWN INSTALLATION (Optional for Outside Mount Only)

Lower the headrail to close the shade. Align the *bottom* hole of the hold down bracket to the plastic pin in the bottom rail end cap. Move the hold down bracket an 1/8" down and mark the screw positions with a pencil.



Using the supplied screws, fasten the hold down bracket to the wall. Repeat for both sides.

Flex the hold down brackets outward so that the plastic pin can be inserted into the *top* hole in the hold down bracket.



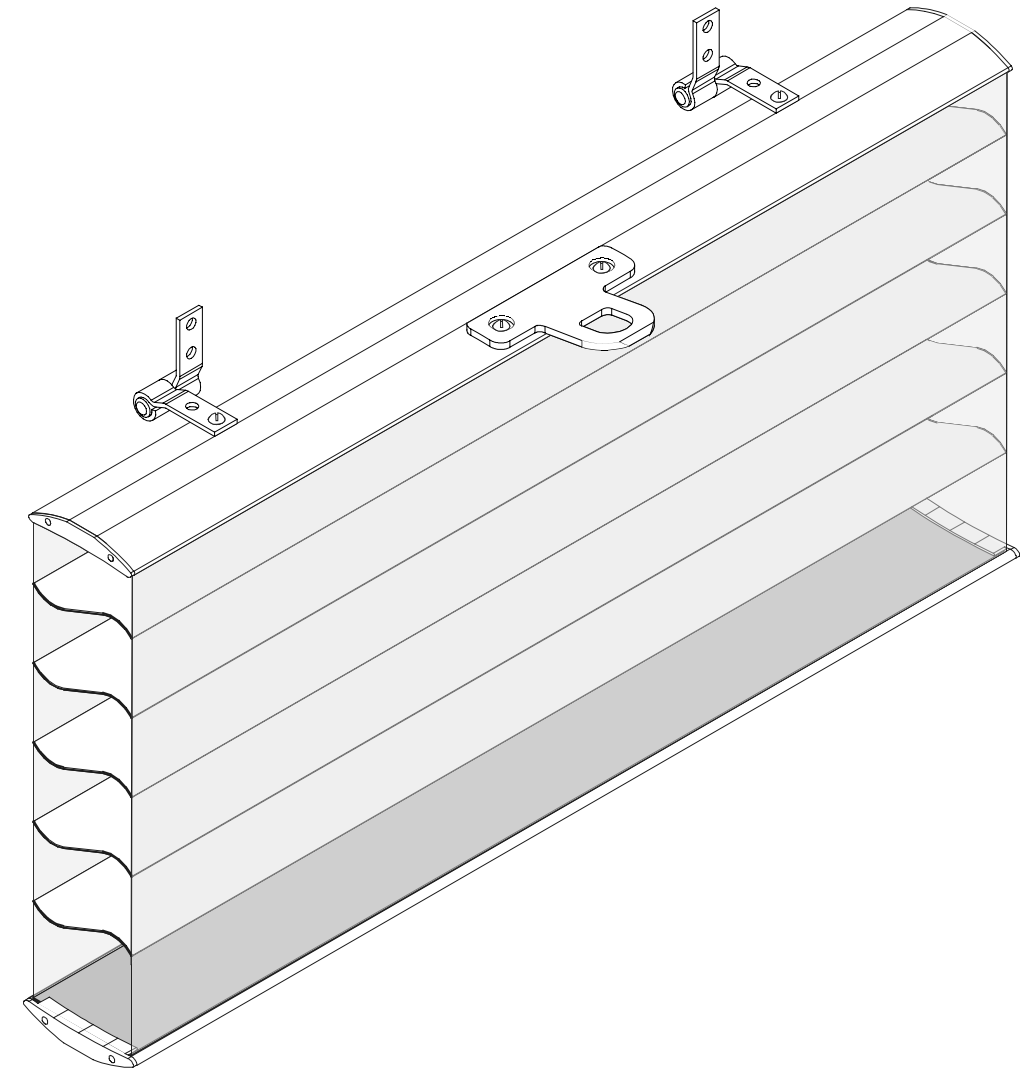
If the shade is an outside mount and hold down brackets are not required, use a pair of pliers to remove the plastic pin from the bottom rail endcaps.

CLEANING AND CARE

The soft and delicate feel of Sheer Horizontal Window Shadings belies the durability of the material. Sheer Horizontal Window Shadings are made of sturdy, knitted polyester fabrics and may be feather dusted or vacuumed at a low suction setting. Spots or stains can be rubbed clean with a damp sponge and mild soap. To avoid discoloration of the material, we recommend against the use of chemical cleaners. If necessary the shading may be ultrasonically cleaned by a professional.

All knitted fabrics experience weave variations due to heat, humidity and other room conditions. These variations can result in slight bowing, puckering and dimpling of the Sheer Horizontal material. The possible variations are minor and have been shown through case study not to detract from the beauty of this product.

Installation Instructions



Sheer Horizontal DoorStyles Window Shadings

Sheer Horizontal DoorStyles Window Shadings represent a design breakthrough in style and function. The unique fabric structure and hardware system are designed to provide years of reliable service when properly installed.

Please take a few minutes to read through these instructions before beginning.